

COMMUNITY RECREATION PLAN

for the

City of Onaway

2016

TABLE OF CONTENTS

INTRODUCTION

COMMUNITY DESCRIPTION

ADMINISTRATIVE STRUCTURE

RECREATION INVENTORY

DESCRIPTION OF THE PLANNING AND PUBLIC INPUT PROCESS

GOALS AND OBJECTIVES

ACTION PROGRAM

RESULTS OF PUBLIC SURVEY

RESULTS OF YOUTH SURVEY

FIGURE 1 – LOCATION MAP OF ONAWAY

FIGURE 2 – STREET MAP OF ONAWAY

FIGURE 3 – CITY ORGANIZATIONAL CHART

FIGURE 4 – MAP OF RECREATION SITES WITHIN CITY

RESOLUTION RECOMMENDING ADOPTION – PARKS COMMITTEE

AFFIDAVIT OF PUBLICATION – PUBLIC COMMENT PERIOD/HEARING

MINUTES OF DECEMBER 5, 2016 CITY COMMISSION MEETING

RESOLUTION ADOPTING PLAN – CITY COMMISSION

LETTER TO PI COUNTY PLANNING COMMISSION

LETTER TO NEMCOG

POST-COMPLETION SELF-CERTIFICATION REPORT

PLAN CERTIFICATION CHECKLIST

INTRODUCTION

The 2016 City of Onaway Community Recreation Plan was drafted by the Onaway City Manager, with the assistance of the City's Parks and Recreation Committee, and the public at large.

Though the City has operated with a master plan for many years, that plan has until now been lacking a comprehensive strategy for the parks, trails, and open spaces within the City limits.

The goal of this Community Recreation Plan is to address that absence by establishing an inventory of those recreational assets, and involving the public to create goals and objectives to turn those assets into the jewels that they should be.

COMMUNITY DESCRIPTION

Location

The City of Onaway is located at the western end of Presque Isle County, in the extreme northeast portion of Michigan's Lower Peninsula. The City is approximately 1.5 miles square, but despite its small size can be accessed by three state highways, M-68, M-33, and M-211. Onaway is approximately 19 miles from Indian River, at which I-75 can be accessed, 35 miles from Cheboygan, and 50 miles from the Mackinaw Bridge. Figure 1 shows a location map for Onaway. Figure 2 provides a street map for the City.

Population

In 2000, the U.S. Census Bureau tabulated a population of 993 for Onaway. The 2010 tabulations show an 11 percent population loss over the decade, to 880. This loss of population continues a trend that began in 1920, when Onaway's population peaked at 2,789. At that time, the timber industry was at its peak and the City was home to a factory that manufactured most of the wooden steering wheels used in automobiles. Shortly thereafter, with much of the timber cleared, the factory burned to the ground and its operator relocated to southern Michigan. By 1930, Onaway's population had dropped to 1,492, as many left to find work elsewhere. The population has continued to decline since, as the jobs lost to the relocation of the factory were not replaced, and homes that once housed large families now house older couples or single senior citizens. Table 1 shows population trends for both City and County from 1940 to the present.

Year	City	County
1940	1,449	12,250
1950	1,421	11,996
1960	1,388	13,117
1970	1,262	12,836
1980	1,084	14,267
1990	1,039	13,743
2000	993	14,411
2010	880	13,376

Source: U.S. Census Bureau, Census 2010 and prior years.

Age Distribution, Special Populations and Racial Make-Up

The age distribution for Onaway's population is shown on Table 2, in comparison to that of the County and the entire state. As the table shows, the percentage of persons aged 65 and older in Onaway is slightly lower than Presque Isle County, but considerably higher than the State of Michigan as a whole. Recreation planning in the City should therefore reflect the needs of this special population.

In terms of ethnic and racial characteristics, Onaway's population is relatively homogeneous. Of the 880 City residents in 2010, 861 were of one race, while the remaining 19 were of two or more races. Further breakdown of those of one race indicates 843 persons were White, one person was Asian, eight were American Indian or Alaskan Native, six were Black and two were of another race. Among White groups, both German and Polish ethnic backgrounds are well represented in the City and surrounding region.

Households and Disability Status

In 2010, Onaway had 2.21 persons per household, compared to 2.20 and 2.49 for the County and State, respectively. The lower City average reflects a larger number of single adults and senior citizens in single-person or childless households. This also correlates to the City's and County's older median age, as noted above.

U.S. Census data for 2010 shows a total of 394 households in the City of Onaway, of which 214 are family households and 180 are non-family households. Family households headed by females in Onaway number 55. There were 10 persons living in group quarters in the City during 2010.

Age in Years	City Population	% of City Population	County Population	% of County Population	% of State Population
Under 5	56	6.4	530	4.0	6.0
5-9	47	5.3	628	4.7	6.5
10-14	68	7.7	728	5.4	6.8
15-19	59	6.7	691	5.2	7.5
20-24	61	6.9	447	3.3	6.8
25-34	81	9.2	1,021	7.6	11.8
35-44	77	8.7	1,282	9.5	12.9
45-54	149	16.9	2,158	16.1	15.2
55-59	59	6.7	1,274	9.5	6.9
60-64	51	5.8	1,119	8.4	5.8
65 and over	172	19.5	3,498	26.2	13.8
Totals	880	100.0	13,376	100.0	100.0
Median Age	43.6 years		51.7 years		38.8 years

Source: U.S. Census Bureau, Census 2010

The 2010 U.S. Census did not record disability status. In 2000, however, nearly 30 percent of Onaway's population was listed as disabled, including almost 35 percent between the ages of 21 and 64 – a figure twice the state average.

School District Boundaries and Population

The Onaway Area School District comprises eight municipalities: the City of Onaway, and Allis, North Allis, Case, Ocqueoc, and Bearinger townships in Presque Isle County, and Forest and Waverly townships in Cheboygan County. Table 3 shows that just two of

the eight municipalities in the District gained population between 2000 and 2010, with growth in both resulting from retirees relocating to the Lake Huron waterfront. The overall change for the entire district was a decrease of 5.3 percent.

Jurisdiction	2000	2010	Percent Change
City of Onaway	993	880	-11.4
Allis Township	1,035	948	-8.4
N. Allis Township	618	521	-15.7
Case Township	942	903	-4.1
Ocqueoc Township	634	655	3.3
Bearinger Township	329	369	12.2
Forest Township	1,080	1,045	-3.2
Waverly Township	472	457	-3.2
Total	6,103	5,778	-5.3

Source: U.S. Census

Trends in School Aged Population

Information on school enrollments can help identify recent trends in school aged populations within the City of Onaway. At present, there is an elementary school, middle school, and high school located just south of the City, in Allis Township. Summary enrollment totals for those schools are shown in Table 4. Presque Isle Academy, located within the City, offers an alternative to students in grades 9-12.

Overall enrollments have declined in the past seven years by approximately 8%, which is reflective to the lack of economic (employment) opportunities in the area, and the increase in retirement aged persons.

School Year	K – 5 th	6 th – 12 th	Total
2010-2011	302	379	681
2011-2012	331	332	663
2012-2013	321	354	675
2013-2014	315	357	672
2014-2015	304	341	645
2015-2016	288	338	626

Source: Onaway Area Schools, Business Office

Income, Education and Employment

Generally speaking, income levels for the Northeast Michigan Region fall below those found in the State as a whole. Table 5 compares income statistics for Onaway, Presque Isle County, and the State.

Table 5. Income Statistics, City of Onaway, Presque Isle County and State Calendar Year 2010		
Jurisdiction	Median Household Income	Per Capita Income
City of Onaway	\$24,091	\$12,453
Presque Isle County	\$39,240	\$27,242
State of Michigan	\$48,669	\$33,221

Source: U.S. Census Bureau, Census 2010 and ACS 2012 5-yr estimates.

Education is an important factor in analyzing the capabilities of the local work force. Educational attainment is tracked by the U.S. Census Bureau. Statistics from the 2010 Census indicate that 69.2 percent of Onaway residents are high school graduates or higher, as compared to 85.4 percent in Presque Isle County and 88.7 percent for the State as a whole. City residents with a bachelor's degree or higher amount to 10.6 percent of the population, while the County and State have 14.4 and 25.5 percent college graduates, respectively.

The Michigan Department of Energy, Labor, and Economic Growth (DELEG) compiles employment data annually on the Michigan.gov web site. Information and employment data on the civilian labor force is presented in Table 6, showing the County from 2008 to 2013.

The unemployment rate for Presque Isle County has traditionally been higher than that of the State. In fact, the County's unemployment rate has been ranking among the highest in the State over the past decade. Table 7 shows the unemployment rates for Presque Isle County and the State for the last five years.

Table 6. Labor Statistics Presque Isle County						
Year	2008	2009	2010	2011	2012	2013
Employed	5,243	4,858	4,803	4,718	4,748	4,703

Source: Michigan Department of Energy, Labor, and Economic Growth (DELEG)

Table 7 Unemployment Rate Comparisons Presque Isle County and State of Michigan 2009-2013 (Annual Averages)					
	2009	2010	2011	2012	2013
Presque Isle County	18.3	17.2	15.5	14.0	14.8
State of Michigan	13.5	12.7	10.4	9.1	8.8
Source: Michigan Department of Career Development Employment Service Agency, Office of Labor Market Information					

Onaway serves as an employment and service center for the western end of Presque Isle County and eastern end of Cheboygan County. Public sector employment in the City, or immediate area, is supplied by the School District, County Road Commission, City, and other offices. Large private sector employers are Moran Iron Works, Presque Isle Electric and Gas Cooperative, and the Black Lake UAW Family Education Center.

Due to the economic declines in the area and decreased employment opportunities, free or low cost public recreational opportunities are more important than ever to the life of this community. Therefore, success in the actualization of these plans, including improved recreational facilities and activities, is more important than ever before.

Transportation Network

The two major transportation routes in Onaway are M-68, which runs east and west through the heart of the City and intersects I-75 19 miles west, and M-33, which extends south near the western City limits. M-211 begins in the center of Onaway, connecting M-68 to Onaway State Park, six miles north.

In addition to roadways, Onaway is served by a county airport located on the City's northern side, along M-211. Although the airport does not support a scheduled carrier, the paved runway supports private aircraft. Additionally, the Presque Isle County Council on Aging operates a bus for senior citizen functions.

While rail service to the area is no longer available, the abandonment of the railway line led to the creation of the North Eastern State Trail, a 70-mile multi-use, hard-pack limestone trail that extends through Onaway between Cheboygan and Alpena, and connects to other trails in the State's trail system.

School Enrollment and Its Relationship to Available Recreation Facilities

School enrollment data can help identify trends in school ages population in the City and surrounding area. The Onaway Area public schools include grades K-12, as well as a pre-school program. Current enrollment (2015-2016 school year) in K-12 is 661 students, a decrease of 55 students from the enrollment in 2010-2011, and an all-time low for the

district. While school activities continue to take precedence, indoor and outdoor school recreational facilities are made available for use by the general public.

Tourism Impact on Recreational Facilities

Tourism is a potentially significant industry in Onaway and Presque Isle County. Presque Isle County is blessed with crystal clear waters, inland lakes, miles of rivers and streams, the largest waterfall in the Lower Peninsula of Michigan, beautiful Lake Huron shoreline, pure clean air, acres of public land, three Lighthouses, and many festivals and activities. Onaway parks and recreation facilities are not only for residents to enjoy, but visitors are encouraged and welcome. Onaway, and the immediate area surrounding it, host several events and festivals throughout the year including a large July 4 celebration, the Dancing Hippo Arts and Crafts Festival, the Black Lake Sturgeon Shivaree, the Chandler Park Christmas Tree Lighting, and the Onaway Antique Car Show.

ADMINISTRATIVE STRUCTURE

The City of Onaway operates under charter as a Council/Manager form of government. The five-member elected City Commission is the City's legislative body. The Commission employs a professional part-time City Manager to carry out the City's day to day responsibilities, implement Commission policies, and enforce City ordinances. The Manager also supervises administrative departments of the City.

In terms of recreation planning, the City Commission is ultimately responsible for setting policy, authorizing plans or projects, and making budget decisions. In these responsibilities, the Commission is assisted by the Onaway Parks and Recreation Committee. The eight-member committee is composed primarily of appointed citizens representing area organizations with a vested interest in the parks. The Commission has also hired professional planning, engineering or design consultants when needed to assist with planning or development projects. The public is routinely invited to comment on recreation plans and projects at regular meetings of the City Commission and Parks Committee, or through special public meetings and hearings on particular projects. Figure 3 outlines the City's organizational structure for recreation planning and administration.

The City has partnered with volunteers from the Onaway Community Chamber of Commerce, Onaway Area Historic Museum, Stepping Stones Garden Club, and others on park projects and events. Park maintenance is provided by the City's Public Works Department as well as the Onaway Area Schools (located in neighboring Allis Township), which mows and maintains the ballfields at Maxon Field and the Edna Lound Recreation Area during the high school baseball and softball seasons, and Onaway Area Little League, which provides maintenance and repair during its season.

Actual 2015-16 fiscal year allotments for park and recreation maintenance and planning totaled \$21,542. This amount does not reflect the salaried office staff time spent on parks-related duties but budgeted under city administration, nor does it reflect the time spent by the School and Little League maintaining the fields. Recreation is supported by the City's general fund, which featured total revenues of \$448,852 in 2015-16. Proposed recreation program expenditures are shown in the Action Plan. The City expects to continue budgeting for parks and recreation for the long term.

RECREATION INVENTORY

The City of Onaway is graced with a number of recreation sites, and potential recreation sites, developed and undeveloped, public and private. Major sites in the City are described below, by ownership category. In addition, a short mention is made of recreation sites outside the City which are especially popular with City residents. A map of the recreation sites within the City limits is shown as Figure 4 at the end of this section.

The City Manager conducted an accessibility evaluation at each park/recreational site owned by the City of Onaway. The Manager referenced the Great Lakes ADA Center at <http://adagreatlakes.org> to assist him in conducting those evaluations. Each site is given a ranking between 1 and 5 based on the 2010 ADA Standards for Accessible Design.

City-owned Sites

Chandler Park

The oldest of the City's recreational facilities, Chandler Park is a four-acre facility that features a children's playground, a small pavilion with fire pit, and a walkway lit by street lamps. The walkway to, from, and around the pavilion is ADA-compliant. The park is home to the Onaway Antique Car Show in August and a Christmas Tree Lighting Ceremony in December. Class and family reunions, weddings, and other social gatherings also are conducted in the park. The park, which is surrounded by State, Park, Poplar, and undeveloped Hemlock streets, is included in Chandler's First Addition to the Original Plat of the City of Onaway, dated 1899. ADA ranking: 2 (some of the facility meets the Principals of Accessible Design)

Edna Lound Recreation Area

Located at the intersection of Cedar and Poplar streets just a few blocks west of M-211, the 6.5-acre Edna Lound Recreation Area is home to three baseball/softball fields, all of which are used by Little League and the general public. The largest of the fields also is used by the Onaway High School softball team. The ELRA also features tennis courts, basketball hoops, and horseshoe pits, though all are in rough shape and in desperate need of repair and/or replacement. There are no ADA-compliant walkways or trails extending through the facility. ADA ranking: 2 (some of the facility meets the Principals of Accessible Design)

Maxon Field

Located at the intersection of M-68 and M-211, three-acre Maxon Field is home to a large baseball field used by Little League, the Onaway High School baseball team, and the general public. The park once was home to an ice skating rink but that space now is occupied by batting cages. There are no facilities at Maxon Field where ADA is applicable.

Historic Onaway Courthouse

Located at the intersection of M-68 (State Street) and Maple Street, the Onaway Courthouse was completed in 1906, when the City was growing and bustling, in hopes that the Presque Isle County seat would be relocated to Onaway. This never materialized leaving Onaway with a courthouse, but no county government to operate from within its walls. Restoration has been ongoing since the late 1990s, and at present the building houses Onaway City Hall, the Onaway branch of the Presque Isle District Library, the Onaway Area Historical Museum, and the Onaway Community Chamber of Commerce. The building is listed on both the State and National historic registers and is completely ADA compliant. ADA ranking: 4 (all of the facility meets the Principals of Accessible Design)

Fourth Street

Located at the corner of S. Fourth and Shaw, these two parcels were acquired by the City as a tax foreclosure. A mobile home and accumulated debris were removed and the property was filled and leveled. It is located in a residential neighborhood and features dimensions of 132-feet-by-180-feet. As a vacant lot, there are no facilities that are applicable to ADA.

Poplar Street

Just across State Street from Chandler Park are four parcels owned by the City. All four contained dilapidated homes, deeded from the private sector to the City, which removed the homes and cleaned up and developed the property, which intersects with Poplar Street. The parcels contain 39,336 square feet of potential recreational space directly across from an existing park. As a vacant lot, there are no facilities that are applicable to ADA.

State-owned sites

North Eastern State Trail

The North Eastern State Trail, which connects Cheboygan to Alpena, cuts through the heart of Onaway. The trail, constructed on hard-packed limestone, crosses M-68 just east of town and both N. Third Street and M-211 in town. There also is a spur off the trail to M-68 near the City's wastewater treatment plant on the west end of town, though that needs further development. At present, there is no trailhead featuring restrooms, information, and parking in Onaway.

County-owned sites

M-211 Renaissance Zone property

Running parallel with M-211 and the Onaway Airport is approximately 15 acres of former Renaissance Zone property owned by Presque Isle County. All 15 acres are vacant, hard, dry ground. This area has been used for community events in the past, including a dedication of the North Eastern State Trail. It could be used for larger community events, such as concerts, circuses, etc.

Other Public Recreation Sites

- Presque Isle District Library – Located in Onaway Courthouse, operated by Presque Isle District Library Board
- Onaway Area Historical Museum – Located in Onaway Courthouse, operated by Onaway Area Historic Museum
- Onaway Senior Citizens Center – Located on S. Lynn Street, operated by Presque Isle County Council on Aging
- The American Wood Rim office building – Located on M-68 (Washington Ave), being restored by Onaway Area Historic Museum, not yet open to the public

Privately-owned sites

Awakon Park

Owned and maintained by Onaway area business Moran Iron Works, and opened to the public in 2015, Awakon Park is located where the American Wood Rim factory once stood that manufactured a majority of the world's (wooden) steering wheels just after the turn of the 20th century. The park features many of the remnants of that factory, which burned down in 1926, as well as an art trail featuring several sculptures created by Moran Iron Works. Access to the park, which remains under development, is on M-68 at the western end of town, and the park is linked by a walking bridge to Chandler Park.

Recreation Sites outside the City

- Stoney Links Golf Course
- Black Lake Golf Course
- Onaway State Park – State of Michigan
- Clear Lake State Park – State of Michigan
- Ocqueoc Falls and Trails – State of Michigan
- Ocqueoc Falls State Forest Campground – State of Michigan
- Ocqueoc Lake Outdoor Center – Presque Isle County
- Tomahawk Lake State Forest Campground – State of Michigan
- Tomahawk Creek Flooding State Forest Campground – State of Michigan
- Shoepac Lake State Forest Campground – State of Michigan
- Black Mountain Trail System – State of Michigan
- Pigeon River Country State Forest and Campground – State of Michigan
- Black Lake Sportsmen's Club
- Sinkholes pathway – State of Michigan
- Onaway Antique Tractor Association grounds
- Forest Township Park
- Amy's Arena horse showgrounds

DESCRIPTION OF THE PLANNING AND PUBLIC INPUT PROCESS

The planning process took place over the course of five meetings of the Onaway Parks and Recreation Committee, taking place between June and October of 2016. All five of those meetings was posted and open to the public, allowing for community input.

Public input also was solicited through a survey, which was mailed with utility bills to all City of Onaway utility customers. The survey also was posted online, attached to the Onaway Community Chamber of Commerce Facebook page, and given to all Onaway Area Schools students in grades 3, 6, 9, and 12.

In addition, a public review and comment period of more than 30 days was published prior to a public hearing being conducted by the Onaway City Commission in consideration of the adoption of the plan. The following chronological description details the planning and public input process undertaken by the City of Onaway in greater detail:

January 18, 2016 – The Onaway City Commission adopts Ordinance 2016-01, creating a parks and recreation committee, with a request that the committee work with the city manager and DPW foreman to draft a community recreation plan for its consideration.

June 6, 2016 – Eight individuals are appointed by the mayor to the parks and recreation committee, with the city commission voting unanimously to approve those appointments. The committee's first order of business will be creating a community recreation plan.

June 21, 2016 – The parks recreation committee meets for the first time. During this meeting, the committee reviews the community description, administrative structure, and recreation inventory drafted by the city manager, and begins work on draft goals and objectives

July 19, 2016 – The parks and recreation committee reviews the goals and objectives developed at the previous meeting, and begins work on an action program for parks, recreational assets, and open spaces.

August 16, 2016 – The parks and recreation committee reviews the action program developed at the previous meeting, and begins work on the public survey to be mailed to all Onaway households and attached to the Onaway Community Chamber of Commerce Facebook page.

August 25, 2016 – A notice of public survey is published in the Presque Isle Advance newspaper, copies are mailed out to all Onaway households, and it goes live on the Chamber's Facebook page. Respondents are asked to complete/return the survey by September 16, 2016.

September 27, 2016 – The parks and recreation committee reviews the survey results and plans for an additional survey of local youth. Onaway Area Community Schools third graders, sixth graders, and ninth graders, and 12th graders will be surveyed as to the needs of Onaway's recreation assets.

October 18, 2016 – The parks and recreation committee reviews the youth survey results, reviews the draft community recreation plan, and votes to send the plan to the city commission for consideration.

October 24, 2016 – The Onaway City Commission votes to schedule a public review and comment period associated with the draft community recreation plan, extending from October 27, 2016 through December 1, 2016, and a public hearing in consideration of adopting the plan December 5, 2016 at 6:30 p.m.

December 5, 2016 – The Onaway City Commission conducts a public hearing in consideration of adoption of the community recreation plan. Following the hearing, the City Commission adopts the community recreation plan (minutes of meeting included as appendix to plan).

GOALS AND OBJECTIVES

Goals are value-based statements that are not necessarily measurable. Objectives appropriate to attaining the goals are measurable steps. Policies, programs, and projects outlined in an action plan or capital improvements schedule are ways to implement the community's goals and objectives. The goals and objectives of the Onaway Community Recreation Plan are as follows:

Goal – Creating recreational activities for Onaway area youth

Objective - Making the recreational facilities safe and accessible to children

Children are among the largest users of many of the City's recreational facilities. Safety and the ability of the City and its partners to keep all recreational facilities safe and well-maintained must be kept in mind during all planning discussions, particularly with a City public works crew of only three year-round employees.

Objective - Developing facilities with plenty for families and children to do

The demographics explained earlier in this plan show that the number of children aged 14 or lower in Onaway slightly exceeds the State average. The demographics also show that the per capita income level is significantly lower in Onaway than State average, while the level of poverty is significantly higher. This indicates a community with young families with little disposable revenue at their disposal, making parks without user fees vital to the City.

Objective - Turn unused/underused public property into additional recreational space

The City over the past decade-plus acquired tax-foreclosed properties, demolished dilapidated structures, and developed the parcels into buildable lots. Many of those lots continue to sit vacant, some of them adjacent to existing recreational facilities and others in neighborhoods with no recreational facilities at all. It may be possible to expand services at existing parks or create small pocket parks on some of these lots, which are more accessible to families in neighborhoods currently without such activities.

Goal – Improving the functionality of Onaway's recreational facilities

Objective - Providing adequate parking and functionality at recreational facilities

At present, there is little to no parking at many of the recreational facilities within the City. This lack of parking can result in under-utilized parks despite other park improvements that could spark new interest from potential park users. Parking that does not conflict with pedestrian traffic must therefore be a consideration during all planning discussions.

Objective - Making the recreational facilities ADA-accessible to the extent possible

The demographics explained earlier in this plan make clear that Onaway has both senior and disabled populations that significantly exceed State averages. With this in mind, recreational facilities must be developed, to the extent possible, with these populations kept in mind.

Objective - Connecting of recreational facilities through some form of linkage system

As stated earlier in the plan, the City itself is just 1.5 square miles. A non-motorized linkage system connecting the recreational facilities together would make them more accessible to

both locals and visitors alike, and improve visitation to all facilities within the City, with the potential to think them in the future to facilities outside the City limits.

Goal – Developing recreational facilities that serve as a catalyst for economic growth

Objective - Improve signage/marketing, create facilities that draw visitors to the area

As stated earlier in the plan, Onaway economy has been stagnant for some time, and tourism is vital component in keeping that economy going. The plan lists the many recreational opportunities in and around Onaway. If those properties collectively are signed and marketed effectively, a positive economic impact to the community is possible.

Goal – Think big, while keeping maintenance in mind

Objective - Creating recreational facilities that can be reasonably maintained

As stated earlier, the City's public works department, which employs only three people year-round, has the primary responsibility for maintaining the public parks within the City limits. Though volunteers could assist with maintenance, staffing must be considered when planning improvements to publically-owned facilities.

Objective - Access funding through grants/intergovernmental funding

A lack of tax base, in addition to limited manpower, has made, and could continue to make, improvements to the City's recreational facilities difficult. Therefore the City should continue to explore partnerships and funding opportunities through both the public and private sector to make needed and desired facility improvements possible.

ACTION PROGRAM

City-owned sites

Chandler Park

The plan is to develop this park as a community hub; a place for town gatherings, family get-togethers, reunions, weddings, etc. It is the central point of Onaway's park system.

The northwest portion of the park would lend itself to a band shell, with plenty of lush green grass for seating. Concerts and the like would provide entertainment to area families and could be marketed to bring others into the community, helping the local economy.

The park is presently served only by a porta-john (removed during the winter). ADA-accessible bathrooms could be built into the back end of the band shell, with the present asphalt trail in the park extending to those facilities.

Though the park already is served by a small pavilion, a larger pavilion likely would make the park more of a draw for larger reunions and gatherings, providing covering in the event of inclement weather.

The park contains a small playground, used frequently by families in the community. This is the primary playground in Onaway. Additional equipment likely would make the park an even bigger draw for families in the area, and extending the asphalt trail to this location would improve ADA accessibility. Bike racks also would make an excellent addition to the park.

The park is somewhat wooded, though many of the trees providing shade were ash, recently killed by insects and removed. A tree replacement program should be undertaken to ensure that the park remains shaded and family-friendly.

The existing asphalt walking trail should be maintained and resurfaced as necessary, and lighting replacement is necessary, as some of the globes have been destroyed and not replaced. Lamp posts that match those along the business corridor should be considered.

Additional activities could be added to the vacant, City-owned Poplar Street properties, directly across dead end State Street from Chandler park and described later in this plan. Parking should be improved, on both State and Park streets. Very little parking presently exists.

Parking improvements, tree replacement, and trail resurfacing could be undertaken by the City, with funds coming from its general fund. The band shell, bathrooms, larger pavilion, and playground improvements likely would require grant dollars and/or a donation drive.

Edna Lound Recreation Area

The plan is to develop this park as the community athletic activity center.

The development of an area to be used as a skate park during the spring, summer, and fall, and an ice rink in the winter would benefit the youth of the City and the greater Onaway area as a whole. This likely may require grant and/or donation dollars.

The existing tennis and basketball courts are in terrible shape and need to be completely refurbished. At present, they are used sparingly, in large part because of the shape they are in. When they were in better shape, they were used much more frequently. Existing lighting now longer works. This project also likely will require grant and/or donation dollars.

The park, used almost exclusively because of the Little League ball diamonds at present, is served by porta-johns, which are removed in the winter. A small concession building with storage and ADA bathrooms would be of great value, though grant dollars and Little League participation likely would be necessary.

The park presently has almost no shade. A tree planting program would solve this problem over time. An open air pavilion with picnic tables also would provide shade for park users, though grant dollars and Little League participation again likely would be needed.

Partially-developed gravel trails presently cut between the fields. Vehicles are driven down these trails during ball games creating a dangerous situation for families watching those games. Parking areas should be developed and these trails should become ADA/pedestrian traffic only.

If one additional (senior Little League/high school varsity) baseball field were constructed, this facility could host tournaments, which would be a plus for the area and a draw to visitors, helping improve the local economy. Additional dollars would be needed to make this possible.

There is a small amount of playground equipment (slide and swing) used by small children during ball games, or when older siblings are playing basketball or tennis. These are in bad shape and should be replaced, preferably with ADA-compliant structures.

Bike racks would make an excellent addition to the park, as would additional bench seating, particularly near the basketball and tennis courts and the playground.

Maxon Field

Located at the heart of the downtown business district, this facility houses only a senior Little League/high school varsity baseball field. If that field was relocated to the Edna Lound Recreation Area, the facility could serve as an alternate location for the band shell proposed at Chandler Park.

The north side of the park also could house the skate park/ice rink proposed for the Edna Lound Recreational Area. However, while this is a more visible location, there also is significantly less room at Maxon Field as there is at the ELRA for such a facility.

The park is served only by a porta-john (removed in the winter), though the park is used for infrequently at present that it remains primarily a ballfield the cost of constructing and maintaining restrooms likely is not justified.

There is no parking at Maxon Field (those that attend games park along the road or in private parking lots) but there also is no room to add a public parking lot as long as the park remains primarily a ballfield.

This also is among the locations discussed for a farmer's market, as it is visible from both M-68 and M-211, though there isn't a lot of room, parking is an issue, and the field can get very soft and spongy after rains

Historic Onaway Courthouse

The courthouse has a rich and colorful history and is the showpiece building and grounds of the greater Onaway Area. While much of the building has been restored, the grounds are in need of some attention.

Some of the trees along the perimeter have died of disease and been cut down. Those should be replaced. Additional planting, flowers, and landscaping also would improve the appearance, as would improved lighting around the perimeter, ideally some that matched the lampposts found through the downtown.

The restrooms located on the lower floor of the courthouse could become the public restrooms for those walking the business district, though they are not marketed that way at present and keeping them open longer hours would require additional maintenance.

This also is among the locations discussed for a farmer's market, as it is in a very visible location, though any permanent structure built for such would conflict with the large arts and crafts show conducted here each summer.

There are bike racks at the rear (library) entrance to the building, but no bike racks at the front entrance. Bench seating also would be a nice addition to the grounds.

Fourth Street

If the decision is made not to sell this vacant property as residential lots, a small pocket park could be developed here. Both Chandler Park and the Edna Lound Recreation Area are several blocks away and a long walk for families with small children.

A small amount of playground equipment could improve the quality of life for families in this neighborhood and help increase property values in the neighborhood as well. This also was discussed as a possible location for a community garden, though it isn't highly visible.

Poplar Street

As mentioned in the action program for Chandler Park, this vacant property is directly across dead end State Street from that facility and therefore could be developed to serve as an enhancement of that park.

Volleyball courts, horseshoe pits, and a large splash pad are among the possible improvements discussed, all of which could enhance Chandler Park as the gather spot for the greater Onaway Area.

There is very little shade on this property, so a tree-planting program could be undertaken to improve that issue over time.

State-owned sites

North Eastern State Trail

At present, there is no ADA trailhead facility with bathrooms, and no designated parking location for users of the trail residing outside the area. This has prevented Onaway from making the trail the economic asset to the community that it should be.

A trailhead facility with bathrooms could be located in another park, allowing such a facility to be used for multiple purposes. The Edna Lound Recreation Area and Awakon Park, should the City acquire a swath of land within its boundaries for such a facility, are two possibilities.

An industrial park road ending in a large cul-de-sac would be a good place for parking, though better marketing is needed to make potential visitors to the area aware of its location. A short link between the cul-de-sac and trail also would be necessary.

Benches with nearby bike racks would make the section of trail through Onaway more user-friendly, and historical markers would improve the trail's appeal to visitors to the area.

County-owned sites

M-211 Renaissance Zone property

As the Renaissance Zone tax benefits associated with the property sunset December 31, 2016, some of this acreage, owned by Presque Isle County's Economic Development Corporation, could be deeded to the City for larger events.

Located in a visible location off M-211, the property, which is firm and solid, even after rains, is the potential location for a farmer's market, as well as things like carnivals, circuses, and the like, which bring visitors to town, helping the local economy.

It does not feature any bathrooms, but because the use initially would be infrequent, this could be addressed with porta-johns, as needed, eliminating construction and maintenance costs. There is plenty of room for parking at this site.

As this could also serve as a location for reunions and gatherings, a pavilion larger than that found in Chandler Park could be constructed here. That same pavilion also could be used during the farmer's market.

Privately-owned sites

Awakon Park

This park, though privately owned and maintained, has been identified as the arts and cultural center of the community. If marketed correctly, it could be an economic catalyst for Onaway and draw visitors into the publically-owned parks.

There presently are no bathrooms at the facility. If the City and park owner are able to reach an agreement that places a small section of the park in public ownership, this could be a location for the trail head/restrooms accessing the Northeast State Trail, though a spur off that trail to that facility would need to be developed.

Results of public survey
Onaway parks and recreational assets

Total number of surveys mailed out:	320
Total number of surveys returned:	103
Total surveys completed on-line	34

Please indicate the number of individuals in your home according to age group below:

0-4	25
5-12	45
13-18	37
19-39	69
40-54	61
55 and over	105
No answer	7

Which Onaway parks/recreational assets have you or your family visited in the past 12 months? (Check all that apply)

Chandler Park	117
Awakon Park	95
Historic Onaway Courthouse	83
Edna Lound Recreation Area	74
Maxon Field	46
Northeast State Trail	41
None/did not answer	9

During the past year, in which activities have you or your family members participated, in Onaway or elsewhere?

Events/festivals	91
Playground	70
Trail walking	67
Swimming	63
Biking	61
Youth team sports	60
Concerts in a park	40
Jogging/running	32
Basketball	27
Adult team sports	19
Ice skating	14
Snowmobiling	14
Volleyball	14
Rollerblading	10
Cross country skiing	10
Tennis	6
Skate boarding	3
None/did not answer	11

How well do you think the following Onaway facilities meet community needs? (Use scale of 1 to 3, with 1 being "meets needs," 2 being "somewhat meets needs," and 3 being "does not meet needs.")

Baseball fields	
Meets needs	59
Somewhat meets needs	29
Does not meet needs	8
Don't know/didn't answer	41
Playgrounds	
Meets needs	40
Somewhat meets needs	55
Does not meet needs	8
Don't know/didn't answer	34
Basketball courts	
Meets needs	22
Somewhat meets needs	32
Does not meet needs	32
Don't know/didn't answer	51
Trails/bike path	
Meets needs	56
Somewhat meets needs	35
Does not meet needs	9
Don't know/didn't answer	37
Tennis courts	
Meets needs	23
Somewhat meets needs	20
Does not meet needs	37
Don't know/didn't answer	57
Informational kiosk	
Meets needs	42
Somewhat meets needs	16
Does not meet needs	19
Don't know/didn't answer	60
Pavilion	
Meets needs	34
Somewhat meets needs	30
Does not meet needs	31
Don't know/didn't answer	42
Space for events, reunions	
Meets needs	19
Somewhat meets needs	40
Does not meet needs	37
Don't know/didn't answer	41

What do you believe are the biggest issues associated with Onaway's parks/recreational assets? (Check all that apply)

Lack of restrooms	86
Lack of activities for adolescents	51
Lack of activities for children	48
Lack of activities for adults	46
Lack of lighting	35
Lack of shade	25
Lack of ADA facilities/access	19
Don't know/didn't answer	28

In the space below, please suggest positive/constructive improvements or make comments on Onaway's parks/recreational assets.

Onaway needs park benches for people who walk and shade trees on vacant lots, like on the Fourth of July when it is so hot.

Need more restrooms at the parks; more activities for children, adolescents, and adults to increase community involvement.

This is not what we would like to see worked on. The City storm sewer needs improvements before parks and recreation. Water drainage, streets, etc. are in dire need of repair, but even some upkeep would be nice. After rain storms the drains are plugged and need to be cleaned out.

Parking at Edna Lound Field and Maxon Field need work.

I believe that adding an ice skating rink at the City park would help with winter boredom. The cost would be low. A skateboard park/bike park would help the teens stay out of trouble.

We don't participate in any of the above because we fear for our safety with no police department here. Really, have you looked around? (Did not answer any questions)

Love the parks but hard to push wheelchairs around the areas.

We live close to Edna Lound and frequently walk the diamonds. During baseball/softball season we notice an increase in trash that is strewn about the park despite the trash cans; usually with the adult tourneys it is very clean by the next afternoon. The basketball courts need new nets and the concrete needs seal coat and new paint. That would be really nice to have! The horseshoe pits are never used, maybe replace them with something else? Not sure what. The tennis courts, also -- I do not see people playing there, maybe a few times each summer. The play area at Chandler Park would benefit from more kid-friendly things. We always see families there. Side note -- we have seen City mowers at Edna Lound just run over trash without picking it up. This does not aid in park cleanliness!

Thank you for your time and effort working to better our community!

It would be nice to have bathrooms at the parks instead of port-a-johns.

Chandler Park sucks! Water park in Chandler Park would bring families in! Can charge a nominal fee. If this doesn't happen, will lose my entire class along with family.

Everything takes time, money, and a workforce. Expanding Chandler Park capabilities; ice rink back at Edna Lound. Will IAI help put us on the map? What could we do as a small town to entice young adults to come here and attend IAI?

Little League and high school fields need to have restrooms! Not sure if this applies, but the high school football field should have a locker room for home and visiting teams.

Merry-go-round; horseshoes; volleyball area; BMX (bike) park.

Remove stumps at Chandler Park; weed the grass out of the sand; clean the area of trash.

Community band shell; baseball field at Edna Lound, then use Maxon for band shell.

The tennis courts need to be weeded. Lighting at the tennis courts also would be helpful.

Not bad for a community such as Onaway.

I believe it would be really nice if we had a year-round community center. Both for our children and adults. Who knows, perhaps we can do community fundraisers, dinners, or some things to help raise money for it! If I could help you, I would.

Don't really use enough to give proper feedback.

Need to have something for older kids such as a skateboard park. Eliminate the tennis courts and put it there. Have movie nights in Chandler Park in summer for kids. Need a permanent restroom for Chandler Park. Have music in the park in summer and fall.

We need restroom facilities at Edna Lound. The committee needs to keep in mind the more facilities we have the greater the expense to maintain properly and funds (taxes) needed.

Would love to see more activities/summer (or weekend) programs for our children and adolescents. A summer YMCA type program would be great.

Keep trying. Can't have it all at once but it's doing better each year.

Appreciate the efforts of DPW, this committee, and city manager in trying to constantly improve our community! We have limited funds and any possible improvements will be welcomed. Thank you for your time and talents!

Maybe poll/involve adolescents as to what they would like to see created, or improved for their interests. Shuffleboard.

Need a pool!!

Would love to see a pavilion for family reunions, class reunions, etc. at Chandler Park! Also, would love to see the City treat the roads around Edna Lound fields once or twice a season for dust control!!

Would love to see concerts in park. Keep up the great work!

More people who live in Onaway and visit Onaway would hang around longer if there were more recreational activities in the City. General maintenance and additional features would make a big difference.

The parks we have need a little TLC.

I think for a small town, the parks and trails are awesome.

Don't need parks. Need cops indeed. (did not complete any questions other than age)

The streets going into and around the ballfields at Edna Lound Recreation Area need to be kept much better, at least graded and chloride put on.

Need sitting areas.

Bigger playground; more activities.

Sorry, all need money. Tapped out. My suggested improvement is shade at the baseball field.

The park is real nice.

Need coordination between city council and committee to address needs of community to bring federal and state dollars to spend only on these matters. Also, have council of city look to future and get new people on city council – young, not old and non-united council that is Onaway!

Can't get around anymore.

Onaway has a lack of parks, period. It needs a dog park and needs more dressing and better curb appeal.

Would love to see Maxon Field in better shape. The fences have finally been improved a little but the field, bleachers, fences, bullpen, concession stand have all been a mess for some time now. There isn't a place for small children to be safe on the home-team side during games either.

More benches/picnic tables.

Space for campers. Ice rink.

I don't use the courts and fields and other services offered.

This survey is a waste of tax dollars.

Take the money spent on this survey and fix light at Chandler Park. (Did not answer any questions)

Need trailhead for Northeast State Trail.

Does Onaway have a public pool? I am in great need of one.

We need more activities for children and youth in Onaway

Onaway is in need of a band shell or larger pavilion for events, bands, kids' activities, movies, etc. This site would need a bathroom, not a porta-potty.

Love Awakon Park. Need more playground equipment for the kids at Chandler.

The tennis courts could use a revamped makeover so we could play tennis while our kids play basketball or at the playground equipment, which also could be improved or added to.

Permanent and maintained restroom.

Need wheelchair accessible playground equipment. In winter - need inside area for people to walk and exercise.

We need music concerts such as RC, Millersburg, and Mackinaw. . All we have is the Fourth and the car show. There could be many, for kids and adults, young and old.

More bike trails, roller blade/bike park, area for concerts, need of pavilion

Edna Lound needs improvements all around. Needs a better mowing program, roads are horrible there among other issues. Bathroom and water access are a must. Chandler is nice but a 2nd pavilion would be a huge asset.

Chandler Park playground needs something for children under 5 - the swings and the playset are intended for older kids (5-12). It would also be nice if there were parking somewhere around Onaway for the NE State Trail. It doesn't have to be a trailhead, but somewhere to park a vehicle when you bring in bikes to ride on the trail.

Bigger pavilion for larger groups. Grills for people to use.

Plant new trees at Chandler Park to replace the dying ones, especially surrounding the playground equipment.

There needs to be a clear and safe and accessible path for snowmobiles and ATV's, the City depends on recreational activities for revenue and we are at risk for getting pulled over by cops because the trails are so poorly marked and you can't get to them

I think that the monkey bars and pull-up bar in Chandler Park should be made a little shorter to accommodate adolescents/children, there should also be some sort of restroom available there.

Have more events in parks so people, who may not otherwise, may discover the parks.

Keep up the great work

I would like to see a landscaping project at the courthouse. Remove the rough looking maples that are left with new trees.

Take the monies that are being wasted on underutilized parks and reduce/retire insane utility fees to the citizens.

We have had many people call our church to borrow our gymnasium for public use. It would be nice to have a public indoor place for year-round recreation. Example: indoor swimming, weights, rock climbing wall, gym with basketball/volleyball court – like a scaled-down version of a YMCA; maybe a banquet hall and gymnasium together in one facility.

Results of youth survey
Onaway parks and recreational assets

Surveys completed by Onaway Area Community Schools students in grades 3, 6, 9, and 12

Which Onaway parks/recreational assets have you or your family visited in the past 12 months? (Check all that apply)

Grade	3	6	9	12	TOTAL
Historic Onaway Courthouse	21	27	28	24	100
Chandler Park	18	24	28	25	95
Awakon Park	21	28	22	23	94
Edna Lound Recreation Area	21	23	20	26	90
Maxon Field	9	20	19	19	67
Northeast State Trail	15	16	15	17	63

During the past year, in which activities have you or your family members participated, in Onaway or elsewhere?

Grade	3	6	9	12	TOTAL
Events/festivals	42	36	29	30	137
Swimming	16	36	32	37	121
Playground	37	36	24	22	119
Biking	24	30	20	15	89
Youth team sports	21	23	16	21	81
Basketball	9	28	20	15	72
Trail walking	0	30	24	15	69
Snowmobiling	6	30	12	21	69
Jogging/running	0	24	21	16	61
Volleyball	0	15	17	11	43
Ice skating	0	19	14	8	41
Concerts in a park	7	13	7	7	34
Rollerblading	1	14	12	3	30
Skate boarding	2	18	4	5	29
Tennis	7	2	4	0	13
Cross country skiing	0	4	2	3	9

How well do you think the following Onaway facilities meet community needs? (Use scale of 1 to 3, with 1 being "meets needs," 2 being "somewhat meets needs," and 3 being "does not meet needs.")

Grade	3	6	9	12	AVG
Informational kiosk	-	1.0	1.0	1.0	1.0
Trails/bike path	-	1.0	2.0	1.5	1.5
Baseball fields	-	1.0	2.0	2.0	1.7
Playgrounds	-	2.0	2.0	1.5	1.8
Pavilion	-	2.0	1.0	2.5	1.8
Space for events, reunions	-	2.0	1.0	2.5	1.8
Basketball courts	-	2.0	2.0	2.0	2.0
Tennis courts	-	2.5	3.0	3.0	2.8

What do you believe are the biggest issues associated with Onaway's parks/recreational assets? (Check all that apply)

Grade	3	6	9	12	TOTAL
Lack of activities for adolescents	34	20	30	31	115
Lack of restrooms	42	20	30	11	103
Lack of activities for adults	40	21	18	11	90
Lack of ADA facilities/access	38	18	21	9	86
Lack of activities for children	38	22	13	5	78
Lack of shade	36	11	3	1	51
Lack of lighting	26	2	3	0	31

Comments – Grade 6, 9, and 12

It would be nice if we could get a better baseball field at Maxon; and better playgrounds, that would be great! I bet almost everyone would love it if we could get an area for a fair to be placed; I would love it if we could get a good volleyball court.

I think our town should have some more adult areas and areas for our age.

I think we should get a swimming area so we don't have to travel to swim.

I like what we have but I think we should improve the school's food and make more places for teens to hang around. And we need fast food restaurants.

Transplant more harmless wildlife.

Better basketball courts; better tennis courts; lighting at parks; activities for teenagers.

I'm not sure, but I think you need to get rid of wood chips at Chandler Park.

Put on more activities for teens; get HUB (community center) back; need like a basketball weekdays; a place for teens when they want to hang out with a pool and rollerblading.

Need to fix the basketball court at Edna Lound.

The fences around the ball parks and the football away team bleachers (at the school) need improvement.

The ballfields need more playground equipment, stands, and scoreboards; Maxon needs a concession stand and maybe moved off the road a bit; Edna Lound basketball courts need major work; there needs to be more older kid equipment at Chandler Park; more bathrooms need to be placed at fields and parks; away football bleachers (at the school) need an update.

Places need more maintenance; more things/activities i.e. movie theater, bowling alley; pizza delivery.

Need more Pokemon Go Pokestops and need to be placed in better locations.

The trails for snowmobiles could use some more care, but most everything else is fine; maintenance on fields and courts could be useful.

Update equipment; get more places to drink for adults and cheaper beverages.

There could be more activities for teenagers and/or young adults to go out and have fun without having to drive to Rogers City/Cheboygan/Gaylord/etc.; more trees.

Want a hang-out spot.

Nice grass.

I love Onaway but I think that teens should have a hang-out spot away from little kids and adults.

I do not visit town often enough to make an accurate review but a fair amount of shade.

It looks way better now, I guess, but it should have more things like a movie theater, bowling alley, and better pizza.

I like the school!

Trails, keeping the town clean, and lighting are good improvements; maintenance is not so great.

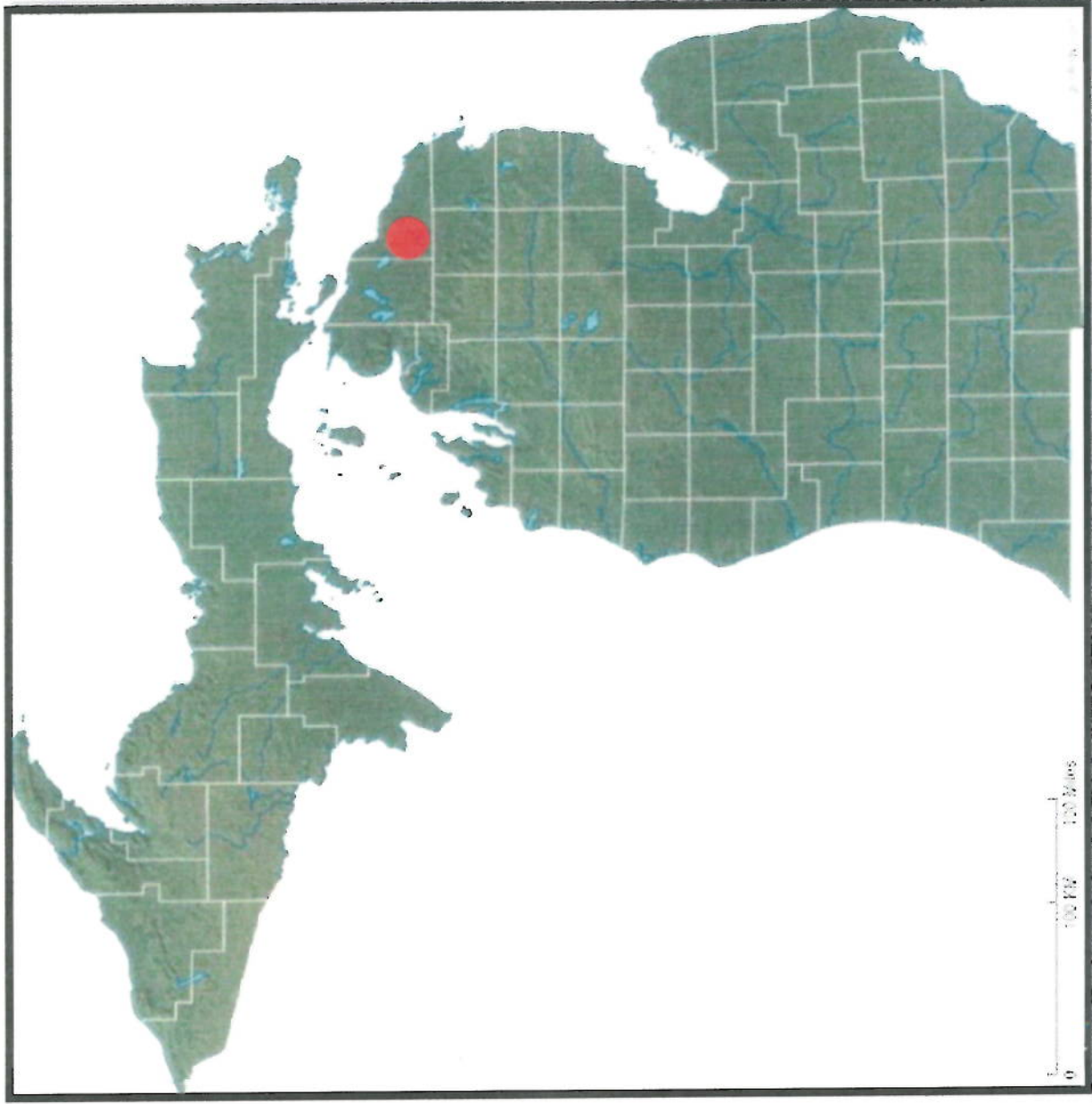
More places for older kids to do something.

Recreation center.

Community track.

Rec center or bowling alley.

FIGURE 1 – LOCATION MAP FOR CITY OF ONAWAY



● ONAWAY

FIGURE 2 - STREET MAP OF ONAWAY

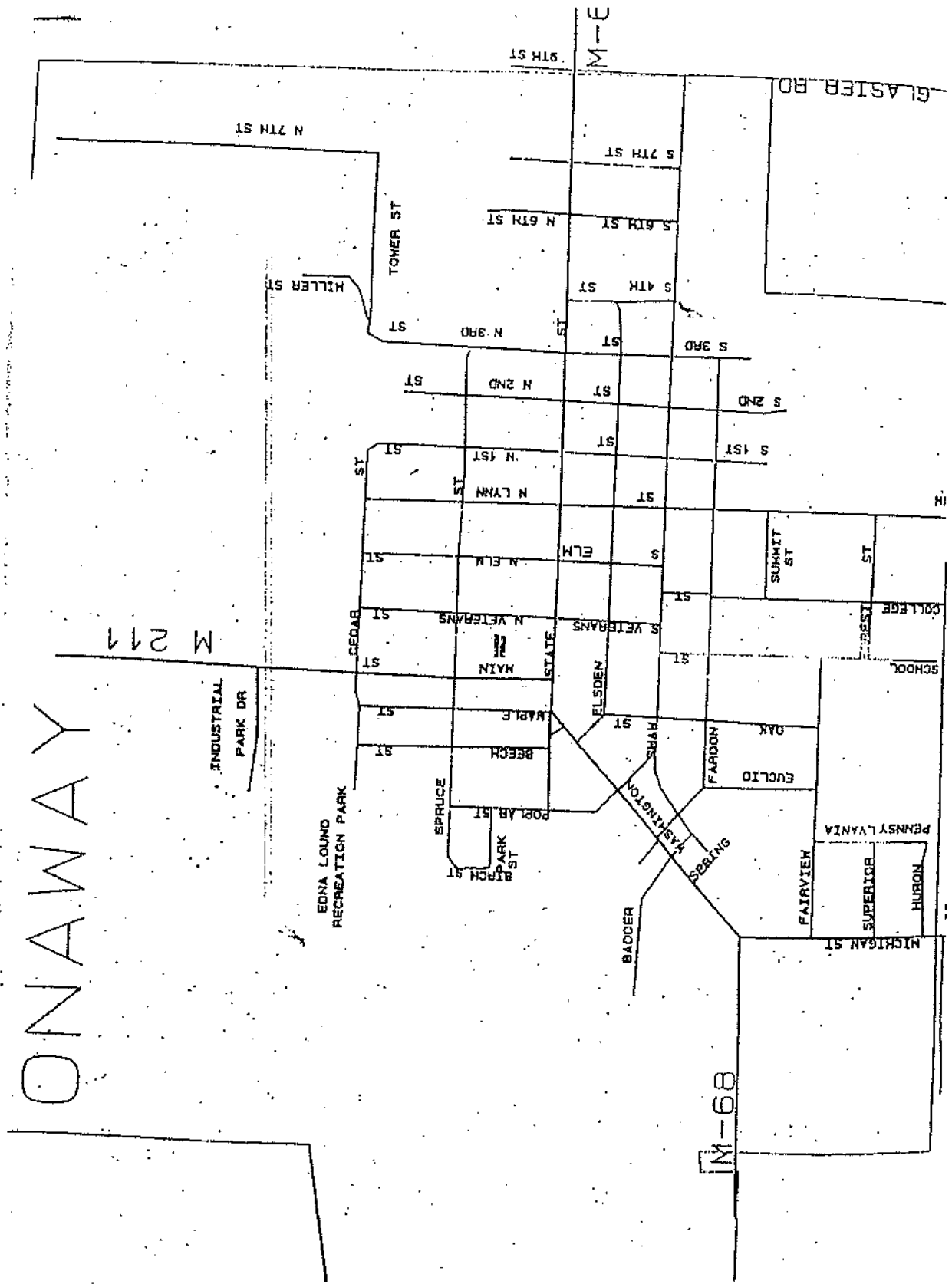


FIGURE 3 – CITY OF ONAWAY ORGANIZATIONAL CHART

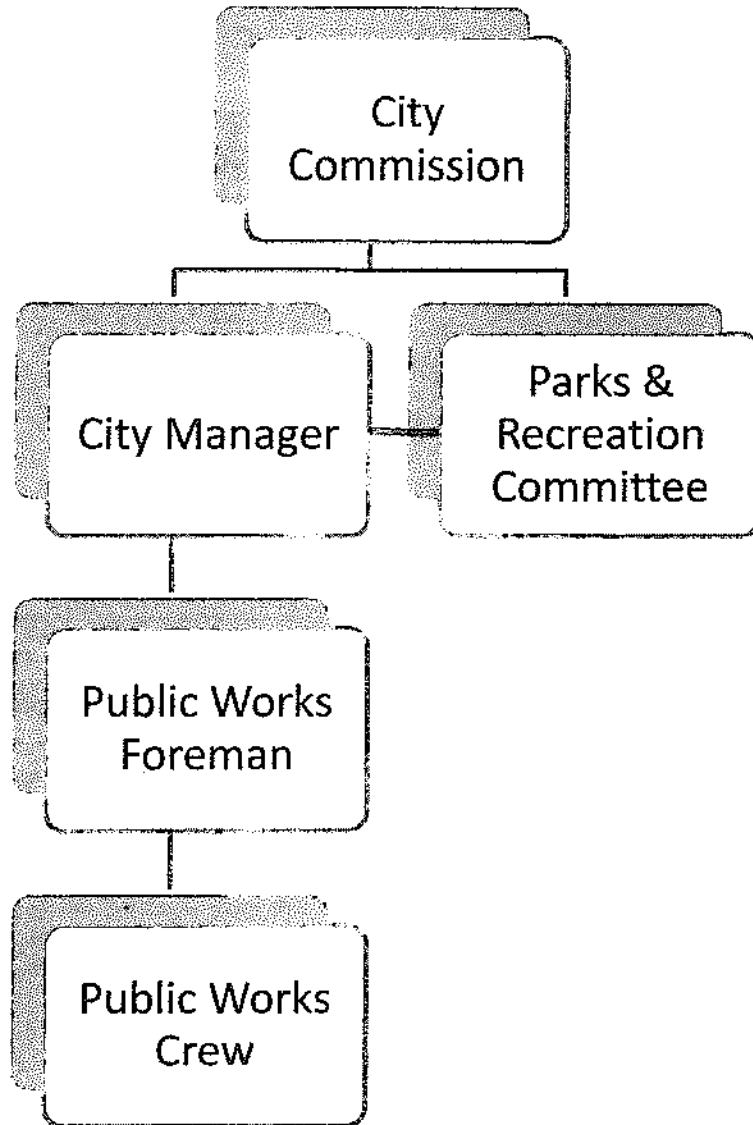
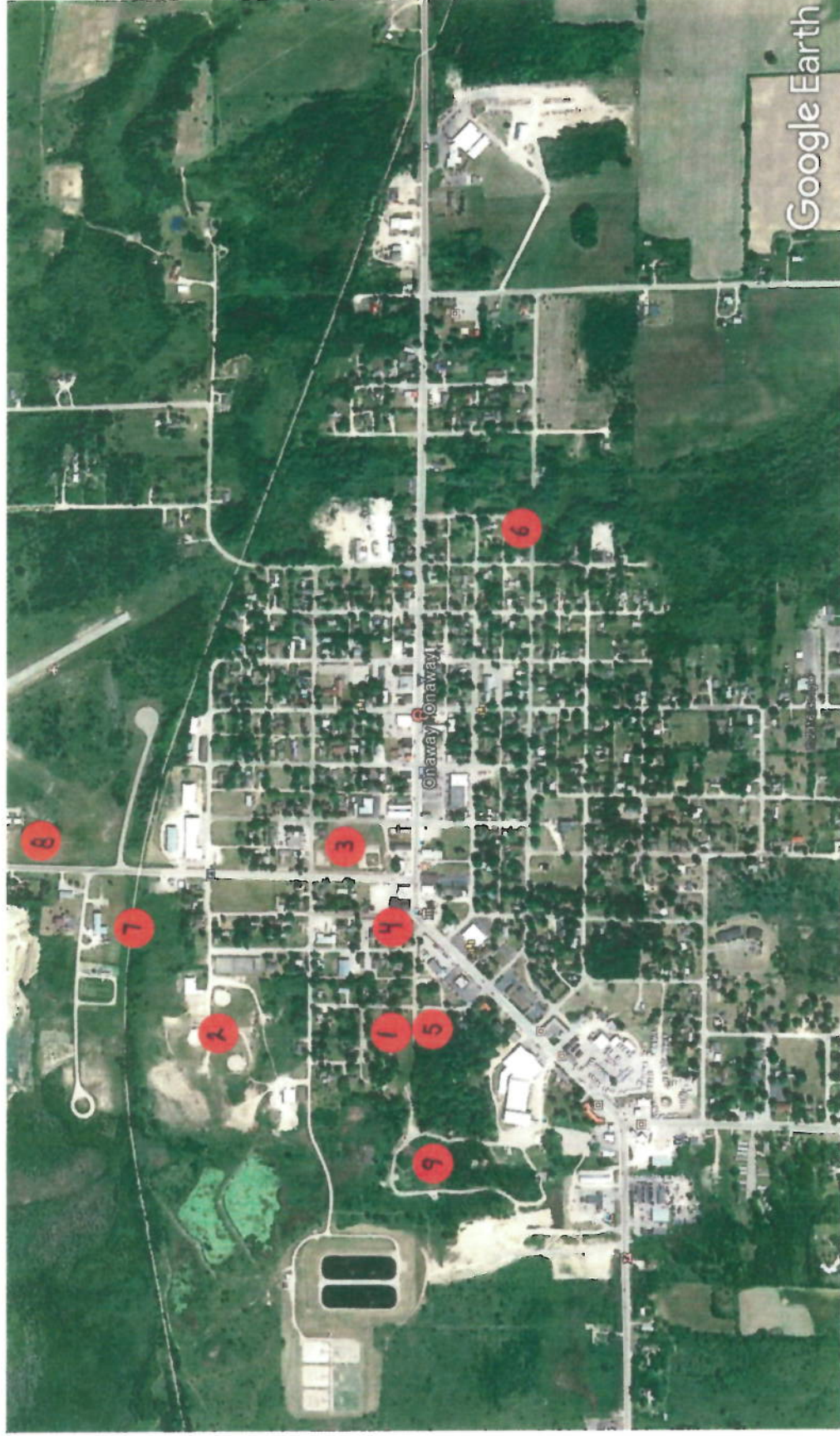


FIGURE 4 – RECREATIONAL SITES WITHIN CITY OF ONAWAY



1-CHANDLER PARK

2-EDNA LOUND RECREATION AREA

3-MAXON FIELD

4-HISTORIC ONAWAY COURTHOUSE

5-POPLAR STREET PROPERTY

6-FOURTH STREET PROPERTY

7-NORTHEASTERN STATE TRAIL

8-RENAISSANCE ZONE

9-AWAKON PARK

**RESOLUTION OF THE ONAWAY PARKS AND RECREATION COMMITTEE
RECOMMENDING ADOPTION OF COMMUNITY RECREATION PLAN BY ONAWAY CITY COMMISSION**

WHEREAS, the City of Onaway Parks and Recreation Committee has spent the past several months examining the needs of the communities parks and recreational spaces, and;

WHEREAS, each meeting of the Committee was open to the public, and the Committee used various methods to solicit public and user input to assist it in drafting a Community Recreation Plan, and;

WHEREAS, the Committee believes the Plan is thorough and reflects the needs of the community, based on the public input received throughout the process, and;

WHEREAS, the Committee believes the Plan is complete based on the most recent guidelines established by the Michigan Department of Natural Resources, and;

WHEREAS, the Committee recognizes the benefit of having a Plan filed with the Department of Natural Resources;

THEREFORE BE IT RESOLVED, that the City of Onaway Parks and Recreation Committee recommends that the Onaway City Commission adopt, and file with the Department of Natural Resources, the Community Recreation Plan for the City of Onaway.

Yeas: 6

Nays: 0

Absent: 2


I, Joseph Hefe, City Manager and acting secretary to the City of Onaway Parks and Recreation Committee, do hereby certify that the foregoing is a true and original copy of a resolution adopted by the City of Onaway parks and Recreation Committee at a regular meeting thereof conducted on the 18th day of October, 2016.

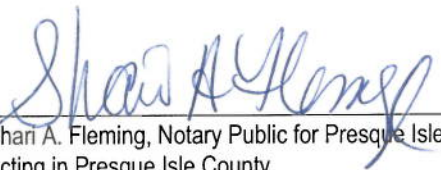


AFFIDAVIT OF PUBLISHER

STATE OF MICHIGAN)
)ss.
COUNTY OF PRESQUE ISLE)

Richard W. Lamb, being duly sworn, testifies that he is publisher of the Presque Isle County Advance, and the Onaway Outlook, a newspaper published at 104 S. Third Street, Rogers City, Michigan and circulated in the above county and that he is familiar with the facts and that the notice, a copy of which is attached, was published in said newspaper October 27, 2016, prior to the time fixed for the hearing thereof.


Richard W. Lamb, Publisher


Shari A. Fleming, Notary Public for Presque Isle County,
Acting in Presque Isle County

Subscribed and sworn to me this 27th day of October 2016

My commission expires: August 7, 2017

PUBLIC NOTICE –
COMMUNITY RECREATION PLAN

The proposed 2016 Community Recreation Plan for the City of Onaway is available for review at Onaway City Hall, 20774 State Street, Onaway, MI, through December 1, 2016 at 12 p.m. **The Onaway City Commission has scheduled a public hearing in consideration of the adoption of the 2016 Community Recreation Plan, December 5, 2016 at 6:30 p.m.** in the Council Chambers of Onaway City Hall. Written input will be accepted throughout the public comment period. Comment also will be accepted at the hearing or in advance, mailed to the City of Onaway, PO Box 761, Onaway, MI 49765.

Proceedings of the Onaway City Commission

A regular, scheduled meeting of the Onaway City Commission was conducted December 5, 2016 in the council chambers at City Hall.

Present: Mayor Gary Wregglesworth; Commissioners Bernie Schmeltzer, Chuck Abshagen, Ron Horrocks, and Jessie Horrocks.

Absent: None.

Also Present: Sunrise Communications, Pete Jakey, Matt Dunn, Randy Scott, Chuck Lawson, Kelly Heidbrier, Rick Mahlmeister, city clerk Kelli Stockwell, and city manager Joe Hefele.

Mayor Wregglesworth called the meeting to order at 6:30 p.m. and the Pledge of Allegiance was recited.

A motion was made by J. Horrocks, seconded by Schmeltzer, to approve the agenda with addition. MOTION CARRIED.

A motion was made by R. Horrocks, seconded by Abshagen, to approve the minutes of the November 21, 2016 regular meeting. MOTION CARRIED.

PUBLIC COMMENT

There was no public comment.

COMMISSIONER REPORTS

J. Horrocks commented on how nice the town looked now that all of the garland is lit; Abshagen complimented the Onaway Community Chamber of Commerce and Moran Iron Works on the previous weekend's Christmas events; Schmeltzer provided a brief update on OAAS happenings and complimented Mark Badgero on the work done at the ambulance barn.

AUDIT REPORT

Rick Mahlmesiter provided a brief report on his audit of the City's 2015-16 fiscal year.

SAW GRANT

C2AE's Randy Scott provided a brief report on the SAW grant. A project kickoff will be conducted with staff the following morning.

COMMUNITY RECREATION PLAN – PUBLIC HEARING

The mayor opened the public hearing at 6:59 p.m. The city manager took the commission through the process leading up to the drafting of the community recreation plan, and the effort to solicit public input. The manager reported that no feedback was received during the public review period leading up to the hearing. There being no member of the public wishing to comment, the mayor closed the hearing at 7:06 p.m.

COMMUNITY RECREATION PLAN – ADOPTION

A motion was made by Schmeltzer, seconded by R. Horrocks, to adopt the following resolution: WHEREAS, the City of Onaway has undertaken a planning process to determine the recreation and natural resource conservation needs and desires of its residents during a five-year period covering the years 2017 through 2021, and WHEREAS, the City of Onaway began the process of developing a community recreation and natural resource conservation plan in accordance with the most recent guidelines developed by the Department of Natural Resources and made available to local communities, and WHEREAS, residents within the City of Onaway were provided with a well-advertised opportunity during the development of the draft plan to express opinions, ask questions, and discuss all aspects of the recreation and natural resource conservation plan, and

WHEREAS, the public was given a well-advertised opportunity and reasonable accommodations to review the proposed Community Recreation Plan for a period of at least 30 days, and
WHEREAS, a public hearing was held on December 5, 2016 at Onaway City Hall to provide an opportunity for all residents of the planning area to express opinions, ask questions, and discuss all aspects of the Plan, and
WHEREAS, the City of Onaway has developed the plan as a guideline for improving recreation and enhancing natural resource conservation for the City of Onaway, and
WHEREAS, after the public hearing, the Onaway City Commission voted to adopt said Community Recreation Plan for the City of Onaway;
NOW, THEREFORE BE IT RESOLVED the Onaway City Commission hereby adopts the Community Recreation Plan for the City of Onaway.
MOTION CARRIED.

TAX FORECLOSURES

A motion was made by Abshagen, seconded by J. Horrocks, to adopt the following resolution:
WHEREAS, the City of Onaway received a list of tax-foreclosed parcels from the Presque Isle County Treasurer dated September 26, 2016; and
WHEREAS, pursuant to Michigan Compiled Law 211.78(m)6 of the General Tax Act, property not previously sold at auction will be transferred to the City on or before December 30 unless the County receives an objection in writing; and
WHEREAS, the Onaway City Commission, at a regular meeting conducted December 5, 2016, reviewed the list of tax-foreclosed parcels not previously sold at auction provided by the County Treasurer; and
WHEREAS, during this review the City Commission determined that it was not interested in taking ownership of any of the properties on the list provided by the County Treasurer;
THEREFORE BE IT RESOLVED, that the Onaway City Commission waives its second right of refusal to all tax-foreclosed parcels that remain unsold following the public auctions on August 6, 2016 and September 19, 2016, in accordance with its right to do so.
MOTION CARRIED.

FINANCE REPORT

A motion was made by R. Horrocks, seconded by Abshagen, to approve the October 2016 finance report as presented. MOTION CARRIED.

MANAGER'S REPORT

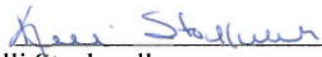
There was brief discussion between the manager and commission about the recent DPW committee meeting and the progress being made by the part-time public works employee, and the decision by Presque Isle County to close the Onaway Airport for the winter.

INVOICE APPROVAL

A motion was made by Abshagen, seconded by Schmeltzer, to approve invoices totaling \$36,436.61. MOTION CARRIED.

ADJOURNMENT

A motion was made by Schmeltzer, seconded by J. Horrocks, to adjourn the meeting. MOTION CARRIED. The meeting adjourned at 7:18 p.m.



Kelli Stockwell
City Clerk

**COMMUNITY RECREATION PLAN
FOR THE CITY OF ONAWAY**

WHEREAS, the City of Onaway has undertaken a planning process to determine the recreation and natural resource conservation needs and desires of its residents during a five year period covering the years 2017 through 2021, and

WHEREAS, the City of Onaway began the process of developing a community recreation and natural resource conservation plan in accordance with the most recent guidelines developed by the Department of Natural Resources and made available to local communities, and

WHEREAS, residents within the City of Onaway were provided with a well-advertised opportunity during the development of the draft plan to express opinions, ask questions, and discuss all aspects of the recreation and natural resource conservation plan, and

WHEREAS, the public was given a well-advertised opportunity and reasonable accommodations to review the proposed Community Recreation Plan for a period of at least 30 days, and

WHEREAS, a public hearing was held on December 5, 2016 at Onaway City Hall to provide an opportunity for all residents of the planning area to express opinions, ask questions, and discuss all aspects of the Plan, and

WHEREAS, the City of Onaway has developed the plan as a guideline for improving recreation and enhancing natural resource conservation for the City of Onaway, and

WHEREAS, after the public hearing, the Onaway City Commission voted to adopt said Community Recreation Plan for the City of Onaway;

NOW, THEREFORE BE IT RESOLVED the Onaway City Commission hereby adopts the Community Recreation Plan for the City of Onaway.

Yeas: 5

Nays: 0

Absent: 0

I, Joseph Hefele, City Manager, do hereby certify that the foregoing is a true and original copy of a resolution adopted by the Onaway City Commission at a Regular Meeting thereof held on the 5th day of December, 2016.)



CITY OF ONAWAY

THE STURGEON CAPITAL OF MICHIGAN

20774 STATE STREET
P.O. BOX 761
ONAWAY, MICHIGAN 49765

(989) 733-8313 PHONE
(989) 733-8713 FAX
(800) 649-3777 TDD

December 6, 2016


Mr. Mike Libby, Chair
Presque Isle County Planning Commission
PO Box 110
Rogers City, MI 49779

Re: City of Onaway Community Recreation Plan

Dear Mr. Libby:

Enclosed is a copy of the 2016 City of Onaway Community Recreation Plan, adopted recently by the Onaway City Commission. Please retain this plan in your records. Thank you.

Sincerely,



Joseph Hefe
City Manager
City of Onaway

20774 STATE STREET
P.O. BOX 761
ONAWAY, MICHIGAN 49765

(989) 733-8313 PHONE
(989) 733-8713 FAX
(800) 649-3777 TDD

December 6, 2016

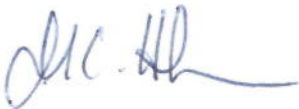
Ms. Diane Rekowski, Executive Director
Northeast Michigan Council of Governments
PO Box 457
Gaylord, MI 49735

Re: City of Onaway Community Recreation Plan

Dear Ms. Rekowski:

Enclosed is a copy of the 2016 City of Onaway Community Recreation Plan, adopted recently by the Onaway City Commission. Please retain this plan in your records. Thank you.

Sincerely,



Joseph Hefe
City Manager
City of Onaway



PUBLIC OUTDOOR RECREATION GRANT
POST-COMPLETION SELF-CERTIFICATION REPORT

This information required under authority of Part 19, PA 451 of 1994, as amended; the Land and Water Conservation Fund Act of 1965, 78 Stat. 897 (1964); and Part 715, of PA 451 of 1994, as amended.

GRANT TYPE: [] MICHIGAN NATURAL RESOURCES TRUST FUND [] CLEAN MICHIGAN INITIATIVE
[] LAND AND WATER CONSERVATION FUND [] RECREATION PASSPORT [] BOND FUND

GRANTEE: City of Onaway

PROJECT NUMBER: 26-00918

PROJECT TYPE: Development

PROJECT TITLE: Onaway Recreation Area

PROJECT SCOPE: 2 Shuffleboard courts, 4 lighted tennis courts, basketball court, drinking fountain, 2 vault-type toilets, bleachers/backstop for ballfield, sidewalk, landscaping and LWCF sign

TO BE COMPLETED BY LOCAL GOVERNMENT AGENCY (GRANTEE)

Table with 3 columns: Name of Agency (Grantee), Contact Person, Title, Address, Telephone, City, State, ZIP, Email. Contains handwritten information for City of Onaway and contact details for Joseph Hefele.

SITE DEVELOPMENT

Any change(s) in the facility type, site layout, or recreation activities provided? If yes, please describe change(s). [X] Yes [] No
THERE ARE NO VAULT-TYPE TOILETS, NO BLEACHERS, AND FOUNTAIN IS LOCATED NEXT TO BALLFIELD, NOT TENNIS COURTS, AS SHOWN

Has any portion of the project site been converted to a use other than outdoor recreation? If yes, please describe what portion and describe use. (This would include cell towers and any non-recreation buildings.) [] Yes [X] No
NO

Are any of the facilities obsolete? If yes, please attach a letter of obsolescence stating what facility is now obsolete and what has been done or is planned to be done with the site the facility was located on. [] Yes [X] No
NOT OBSOLETE, BUT TENNIS COURTS, BASKETBALL COURT NEEDS TO BE RECONSTRUCTED AND LIGHTING SYSTEM NEEDS TO BE OVERHAULED OR ELIMINATED.

SITE QUALITY

Is there a park entry sign which identifies the property or facility as a public recreation area? If yes, please provide a photograph of the sign. If no, please explain. [X] Yes [] No
SEE ATTACHED

Are the facilities and the site being properly maintained? If no, please explain. [X] Yes [] No
AS MUCH AS THE CITY'S BUDGET ALLOWS, THEY NEED WORK

Is vandalism a problem at this site? If yes, explain the measures being taken to prevent or minimize vandalism. [] Yes [X] No

POST COMPLETION SELF-CERTIFICATION REPORT - CONT'D

Is maintenance scheduled on a regular basis? If yes, give schedule. If no, please explain.

SEMI-ANNUAL MAINTENANCE,

Yes No

GENERAL

Is a Program Recognition sign permanently displayed at the site? If yes, please provide a photograph. (Not required for Bond Fund Grants)

Yes No N/A

Is any segment of the general public restricted from using the site or facilities? (i.e. resident only, league only, boaters only, etc.) If yes, please explain.

Yes No

Is a fee charged for use of the site or facilities? If yes, please provide fee structure.

Yes No

What are the hours and seasons for availability of the site?

24/7

365 DAYS PER YEAR

COMMENTS (ATTACH SEPARATE SHEET IF MORE SPACE IS NEEDED)

POST COMPLETION SELF-CERTIFICATION REPORT - CONT'D

CERTIFICATION

I do hereby certify that I am duly elected, appointed and/or authorized by the Grantee named above and that the information and answers provided herein are true and accurate to the best of my personal knowledge, information and belief.

JOSEPH HESTER, CITY MANAGER
Please print

[Signature]
Grantee Authorized Signature

7-16-15
Date

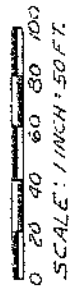
Kelli Stallwell
Please print

[Signature]
Witness Signature

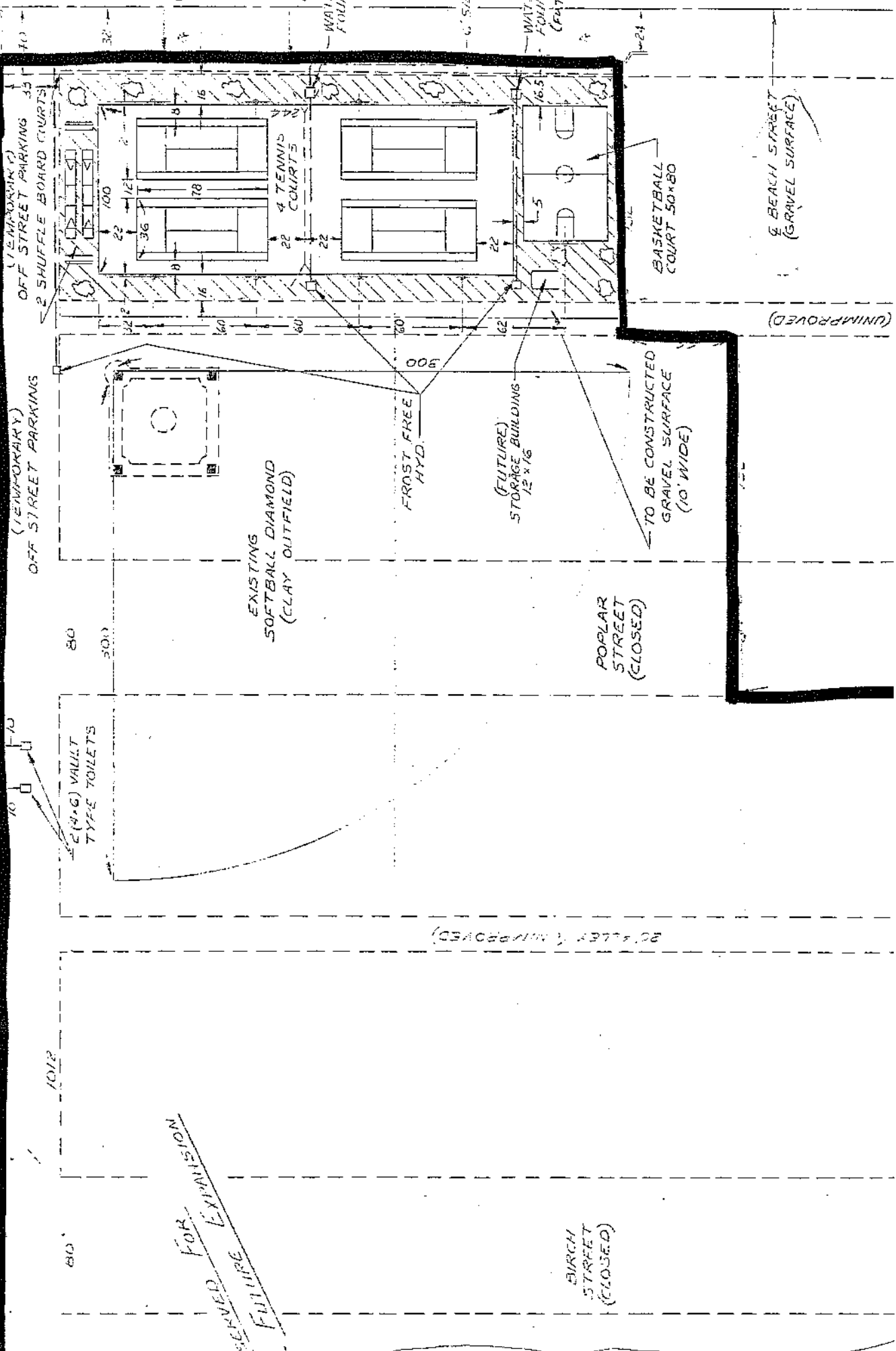
7/16/15
Date

Send completed report to: POST COMPLETION GRANT INSPECTION REPORTS
GRANTS MANAGEMENT
MICHIGAN DEPARTMENT OF NATURAL RESOURCES
PO BOX 30425
LANSING MI 48909-7925

SITE BOUNDARY



1092 CEDAR STREET (UNIMPROVED)



RESERVED FOR FUTURE EXPANSION

BIRCH STREET (CLOSED)

POPLAR STREET (CLOSED)

TO BE CONSTRUCTED GRAVEL SURFACE (10' WIDE)

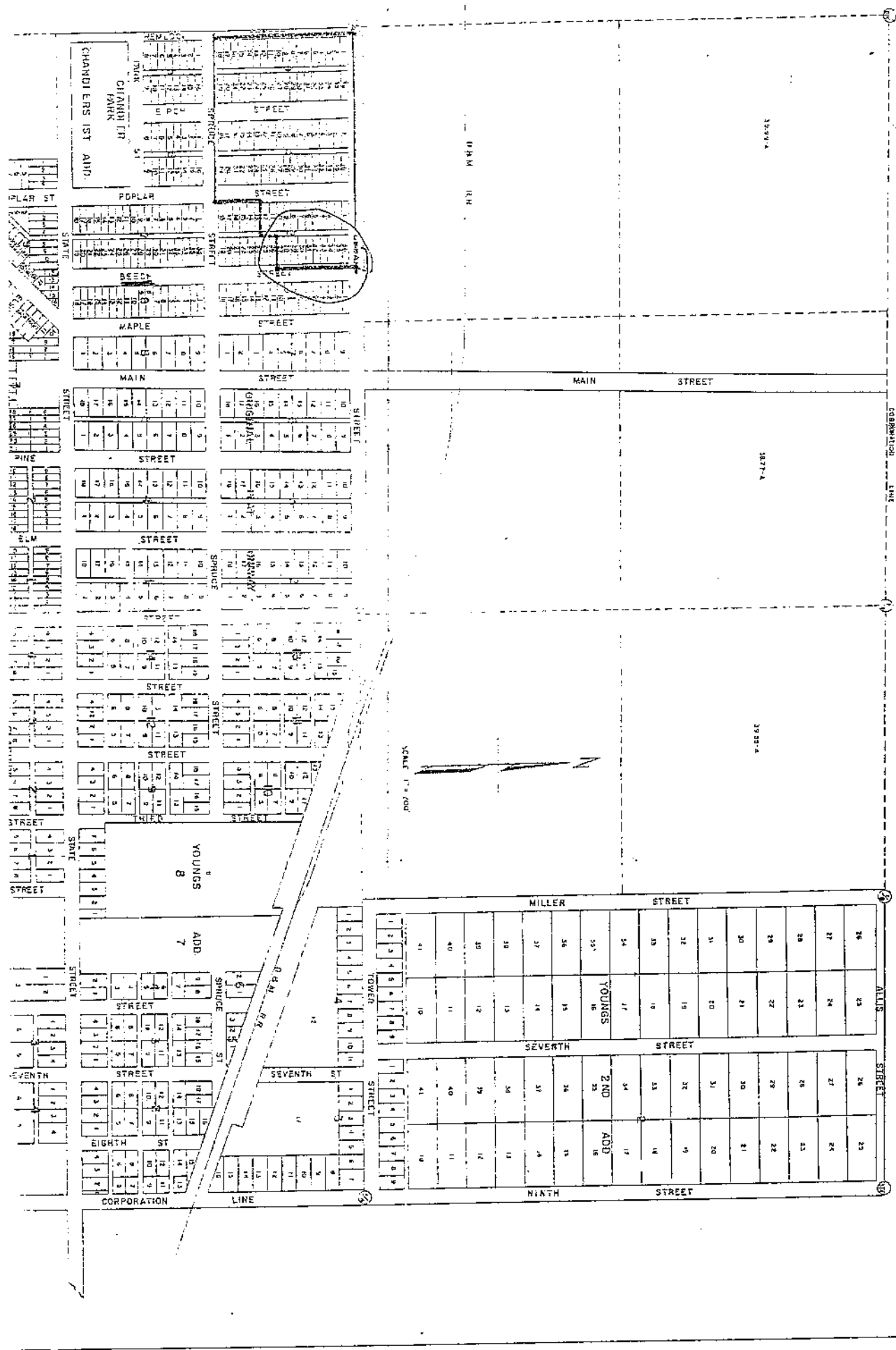
BEACH STREET (GRAVEL SURFACE)

(UNIMPROVED)

(UNIMPROVED)

CITY OF ONAWAY

ONAWAY RECREATION AREA



DEED under Act 223, P.A. 1909 as amended by Act 33, P.A. 1935 and Act 154, P.A. 1941

THIS INDENTURE, Made this 25th day of April, in the year of our Lord, 1956

BY AND BETWEEN, The DEPARTMENT OF CONSERVATION for the STATE OF MICHIGAN, the successor in office and trust to the Public Domain Commission of the State of Michigan, under and by virtue of the authority in said department vested by Act No. 17, of the Public Acts of 1921, party of the first part, and City of Onaway, Michigan

part V of the second part.

WITNESSETH, That

WHEREAS, City of Onaway

the said part V of the second part has purchased of the State of Michigan the tract or parcel of tax reverted lands situate and being in the County of Presque Isle, State of Michigan, and described as follows, to-wit:

CITY OF ONAWAY

Chandler's First Addition

Block Two (2)

Lots One to Twelve (1 to 12) inclusive.

Lots Twenty-seven to Thirty-six (27 to 36) inclusive.

Block Three (3)

Lots One to Thirty-six (1 to 36) inclusive.

Block Four (4)

Lots One to Thirty-six (1 to 36) inclusive.

CITY OF ONAWAY

Shaw's Third Addition

Block Two (2)

Lots One to Ten (1 to 10) inclusive.

All according to the Plats thereof.

AND WHEREAS, it is expressly understood that the land herein described shall be used solely for Public purposes, and, when same ceases to be used for such purposes, it shall revert to the State of Michigan.

NOW, THEREFORE, THIS INDENTURE WITNESSETH, That the said DEPARTMENT OF CONSERVATION for the State of Michigan, party of the first part as aforesaid, acting for and in behalf of the State under and by virtue of the authority vested in it by said Act 223, P.A. 1909 as amended by

Act 33, P.A. 1935 and Act 154, P.A. 1941

in consideration of the premises and of the sum of One dollar (\$1.00) dollars paid by said party of the second part to said first party, the receipt whereof is hereby acknowledged, does by these presents, grant, convey, release and quit-claim unto the said City of Onaway

part V of the second part, and to its successors, and assigns, for the purposes stipulated herein, all the right, title and interest acquired by the State in and to all of said above described premises, SAVING AND EXCEPTING OUT OF THIS CONVEYANCE and always reserving unto the said State of Michigan, all mineral, coal, oil and gas, lying and being on, within or under the said lands hereby conveyed, with full and free liberty and power to the said State of Michigan, its duly authorized officers, representatives and assigns, and its or their lessees, agents and workmen, and all other persons by its or their authority or permission, whether already given or hereafter to be given, at any time and from time to time, to enter upon said lands and take all usual, necessary, or convenient means for exploring, mining, working, piping, getting, laying up, storing, dressing, making merchantable, and taking away the said mineral, coal, oil and gas; and also saving and reserving unto the People of the State of Michigan the rights of ingress and egress over and across all of the above mentioned descriptions of land lying along any watercourse or stream, pursuant to the provisions of Section 12, of Act 230, Public Acts of 1909, as amended. Further, excepting and reserving to the State of Michigan all aboriginal antiquities including mounds, earth-works, forts, burial and village sites, mines or other relics and also reserving the right to explore and excavate for the same, by and through its duly authorized agents and employees, pursuant to the provisions of Act 173, Public Acts of 1929.

IN WITNESS WHEREOF, the said party of the first part, by the Director thereof, has hereunto subscribed its name and affixed the seal of said Department of Conservation the day and year first herein above written.

Signed, Sealed and Delivered in Presence of: DEPARTMENT OF CONSERVATION FOR THE STATE OF MICHIGAN

Rhea Jenkins
Rhea Jenkins
M. Irene Gorsline
M. Irene Gorsline

By Wayland Osgood, Deputy Director

STATE OF MICHIGAN, } ss.
County of Ingham

On this Twenty-fifth day of April, A.D. 1956, before me, a Notary Public in and for said county personally appeared Wayland Osgood, Deputy Director of the Department of Conservation for the State of Michigan, to me known to be the same person who executed the within instrument, and who acknowledged the same to be his free act and deed and the free act and deed of the Department of Conservation for the State of Michigan in whose behalf he acts.

My Commission Expires April 28, 1959

M. Irene Gorsline
M. Irene Gorsline
Notary Public, Ingham County, Michigan

Recorded in Liber 153 of Deeds, Page 484

DEED

State of Michigan

TO

REGISTER'S OFFICE

County of Washtenaw 9th

Received for Record this

day of May 1956

at 11 o'clock A M, and

recorded in Liber

of Deeds at Page

Book 9
Register

SALES TAXED 10% USE MOTOR V. 31313

CHANDLER'S 1ST ADD

Block #2 - Lots 1-12 & 27-56

Block #3 - entire

Block #4 - entire

Block #5 3RD ADD - Block #3

Lots 41-10

if for public purposes



COMMUNITY PARK, RECREATION, OPEN SPACE, AND GREENWAY PLAN CERTIFICATION CHECKLIST

By Authority of Parts 19, 703 and 716 of Act 451, P.A. 1994, as amended, submission of this information is required for eligibility to apply for grants

INSTRUCTIONS: Complete, obtain certification signatures and submit this checklist with a locally adopted recreation plan.

All recreation plans are required to meet the content and local approval standards listed in this checklist and as outlined in the *Guidelines for the Development of Community Park, Recreation, Open Space and Greenway Plans* provided by the Michigan Department of Natural Resources (DNR). Plans must be submitted to the DNR **with** a completed checklist that has been signed by an authorized official(s) of the local unit of government(s) submitting the plan. Plans may be submitted at any time of the year, but no later than March 1 of the year the local unit of government is applying for grants.

PLAN INFORMATION

Name of Plan: Community Recreation Plan for the City of Onaway		
List the community names (including school districts) that are covered under the plan and have passed a resolution adopting the plan.	County	Month and year plan adopted by the community's governing body
City of Onaway	Presque Isle	December 2016

PLAN CONTENT

INSTRUCTIONS: Please check each box to certify that the listed information is included in the final plan.

1. COMMUNITY DESCRIPTION

2. ADMINISTRATIVE STRUCTURE

- Roles of Commission(s) or Advisory Board(s)
- Department, Authority and/or Staff Description and Organizational Chart
- Annual and Projected Budgets for Operations, Maintenance, Capital Improvements and Recreation Programming
- Current Funding Sources
- Role of Volunteers
- Relationship(s) with School Districts, Other Public Agencies or Private Organizations

Regional Authorities or Trailway Commissions Only

- Description of the Relationship between the Authority or Commission and the Recreation Departments of Participating Communities
- Articles of Incorporation

3. RECREATION INVENTORY

- Description of Methods Used to Conduct the Inventory
- Inventory of all Community Owned Parks and Recreation Facilities
- Location Maps (site development plans recommended but not required)
- Accessibility Assessment
- Status Report for all Grant-Assisted Parks and Recreation Facilities

4. RESOURCE INVENTORY (OPTIONAL)

5. DESCRIPTION OF THE PLANNING PROCESS

6. DESCRIPTION OF THE PUBLIC INPUT PROCESS

Description of the Method(s) Used to Solicit Public Input Before or During Preparation of the Plan, Including a Copy of the Survey or Meeting Agenda and a Summary of the Responses Received

Copy of the Notice of the Availability of the Draft Plan for Public Review and Comment

Date of the Notice October 27, 2016

Type of Notice Newspaper ad - PI Advance

Plan Location Onaway City Hall

Duration of Draft Plan Public Review Period (Must be at Least 30 Days) 36 days

Copy of the Notice for the Public Meeting Held after the One Month Public Review Period and Before the Plan's Adoption by the Governing Body(ies)

Date of Notice October 27, 2016

Name of Newspaper Presque Isle Advance

Date of Meeting December 5, 2016

Copy of the Minutes from the Public Meeting

7. GOALS AND OBJECTIVES

8. ACTION PROGRAM

9. POST-COMPLETION SELF-CERTIFICATION REPORT(S)

PLAN ADOPTION DOCUMENTATION

APPROVAL DOCUMENTATION: For multi-jurisdictional plans, **each** local unit of government must pass a resolution adopting the plan. Prepare and attach a separate page for each unit of government included in the plan.

1. Official resolution of adoption by the governing body **dated:** December 5, 2016

2. Official resolution of the Parks and Recreation Committee Commission or Board, recommending adoption of the plan by the governing body, **dated:** October 18, 2016

3. Copy of letter transmitting adopted plan to County Planning Agency **dated:** December 6, 2016

4. Copy of letter transmitting adopted plan to Regional Planning Agency **dated:** December 6, 2016

OVERALL CERTIFICATION

NOTE: For multi-jurisdictional plans, Overall Certification must include the signature of each local unit of government. Prepare and attach a separate signature page for each unit of government included in the plan.

I hereby certify that the recreation plan for

City of Onaway

(Local Unit of Government)

includes the required content, as indicated

above and as set forth by the DNR.



Authorized Official for the Local Unit of Government

12-6-16

Date

This completed checklist must be uploaded in MiRecGrants.